



企业画册

CORPORATE BROCHURE

深圳市四方电气技术有限公司
Shenzhen Simphoenix Electric Technology Co.,Ltd

创新科技 掌控未来
Control the Future by
Innovation and Technology

深圳市四方电气技术有限公司
Shenzhen Simphoenix Electric Technology Co.,Ltd

地址：深圳市宝安区西乡固戍二路汇潮工业区厂房A栋
总机：(86) 0755-26919258
传真：(86) 0755-26919882
网址：www.simphoenix.com.cn

万维电气（惠州）有限公司
Huizhou Simphoenix Electric Co.,Ltd

地址：惠州市仲恺高新区中韩惠州产业园起步区松柏岭大道23号
联系电话：(86) 0752-2600100

版权所有 © 深圳市四方电气技术有限公司/产品在改进时，资料可能有所改动，恕不另行通知。（版本/V1.0-2025.07）



24小时服务热线
400-8819-800

为客户提供主动增值性服务

Preface
前言

岁月的年轮，
记录奋斗者过往的足迹。
黎明的曙光，
照耀追梦人前行的征程。
不忘初心，砥砺前行。

我们以此为基，开拓更为坚实与广阔的四方发展事业。
用更坚实的步伐，向着新的目标迈进——
成为世界领先的自动化产品和解决方案提供商。

The rings of time record the footprints of the strivers in the past.
The dawn's light brighten the journey ahead of dream chasers.
Stay true to our original aspiration and forge ahead with determination.

Based on this, we will explore a more solid and broad business
development for Simphoenix.
With more solid steps, we will move towards a new goal - to become a
world-leading provider of automation products and solutions.

01

总经理致辞
Address from President

03

主营业务
Main Business

产品架构
Product architecture

应用行业
Application industry

核心优势
Core Advantages

05

未来展望
Vision

02

关于四方
About Us

企业概况
Company profile

发展历史
Development history

组织架构
Organizational structure

荣誉资质
Honors and qualifications

04

企业文化
Enterprise Culture

品牌故事
Brand Story

企业文化
Corporate culture

四方生活
Life in Simphoenix

总经理致辞

ADDRESS FROM PRESIDENT



深圳市四方电气技术有限公司 总经理
余功军 西安理工大学 博士

Yu Gongjun
President of Simphoenix

自2004年创立以来，四方电气凭借对客户需求的深刻洞察与团队追求卓越的执着，逐步成长为国内领先的自动化产品及解决方案提供商。我们的每一步发展，都源于客户的信任与团队的奋斗。

当前，自动化行业正经历深刻变革。四方电气将坚守“创新进取”的精神，践行“持续为客户创造价值”的使命，主动拥抱变化，以坚实的行动迎接挑战，矢志成为全球领先、受人尊敬的工业自动化服务商，以卓越成就回馈客户与社会。

万里关山从头越，乘风破浪正当时。站在新起点，四方电气诚邀您携手并进，共绘自动化行业的壮阔新篇章。

From 2004 till now, Simphoenix has gradually grown into a leading provider of automation products and solutions in China, thanks to the profound understanding of customer needs and the team's persistent pursuit of excellence. Every step of Simphoenix's development stems from the trust of our customers and the hard work of our team.

At present, the automation industry is undergoing profound changes. Simphoenix will adhere to the spirit of "innovation and progress", fulfill the mission of "continuously creating value for customers", proactively embrace changes, and take solid actions to meet challenges. It is determined to become a globally leading and respected industrial automation service provider, and repay customers and society with outstanding achievements.

"Crossing the mountains from head to toe, braving the wind and waves at the perfect time". Standing at a new starting point, Simphoenix sincerely invites you to join hands and work together to write a magnificent new chapter in the automation industry.



CLIENTS SERVICE

紧密贴近客户，持续为客户带来更多价值上的提升

Stay close to customers and continuously bring more value improvements to them

关于四方

ABOUT US

深圳市四方电气技术有限公司是深圳市民营高科技企业，是经国家认定的高新技术企业、深圳市科技和信息局认定的软件企业。公司成立于2004年，专业从事工业自动化产品的开发、生产、销售与服务。四方电气全资控股子公司——万维电气（惠州）有限公司，专注于自动化领域，与母公司共同努力，致力于为客户提供一流的产品和解决方案。

四方电气以成为“卓越的自动化产品和解决方案提供商”为企业愿景，为保证专业技术的领先性和创新性，通过持续投入和优化研发布局不断提高产品的核心竞争力。公司以拥有独立自主知识产权的专业技术为依托，紧密贴近客户，持续为客户提

Shenzhen Simphoenix Electric Technology Co.,Ltd. is a private high-tech enterprise in Shenzhen. It is a high-tech enterprise recognized by the Chinese government and a software enterprise recognized by the Shenzhen Science and Technology and Information Bureau. The company was established in 2004 and specializes in the development, production, sales and service of industrial automation products . Huizhou Simphoenix Electric Co., Ltd., a wholly-owned subsidiary of Simphoenix, focuses on the field of automation and works together with Simphoenix to provide customers with first-class products and solutions.

Simphoenix aims to become an "outstanding provider of automation products and solutions". To ensure the leading and innovative nature of its professional technology, we continuously invests and optimizes its R&D layout to enhance the core competitiveness of its products. Relying on professional technologies with independent intellectual property rights, our company closely follows customers,

供满意产品和解决方案，以及主动的增值性服务，力促产业发展升级。目前，公司的产品已经广泛应用于机床、塑胶、起重、建筑、纺织、电线电缆、空压机、供水、暖通空调、食品、印刷包装等多个领域。

“创新、进取”是四方电气的企业精神，“持续为客户创造价值”是四方电气的企业使命，我们一直致力于创新业务架构应对市场发展，企业流程再造实现内部创新，在企业内部营造员工在交流中不断碰撞的文化氛围，实现企业全面过程监管。立足于工业自动化领域，全力创建受人尊敬和最具创新力的行业知名品牌是四方电气不断奋进的方向。

continuously providing them with satisfactory products and solutions, as well as proactive value-added services, to promote the upgrading of industrial development. At present, the company's products have been widely applied in multiple fields such as machine tools, plastics, lifting, construction, textiles, wires and cables, air compressors, water supply, HVAC, food, printing and packaging, etc.

"Innovation and progress" are the corporate spirits of Simphoenix. "Continuously creating value for customers" is the corporate mission of Simphoenix. Simphoenix has always been committed to innovating business architectures to respond to market development, reengineering enterprise processes to achieve internal innovation, creating a cultural atmosphere within the enterprise where employees constantly collide in communication, and realizing comprehensive process supervision of the enterprise. Based in the field of industrial automation, we are fully committed to creating a respected and most innovative industry brand, it is the direction that Simphoenix is constantly striving for.



四方电气万维科技园概念图 Wanwei Technology Park



2004

创立年份
Year of establishment

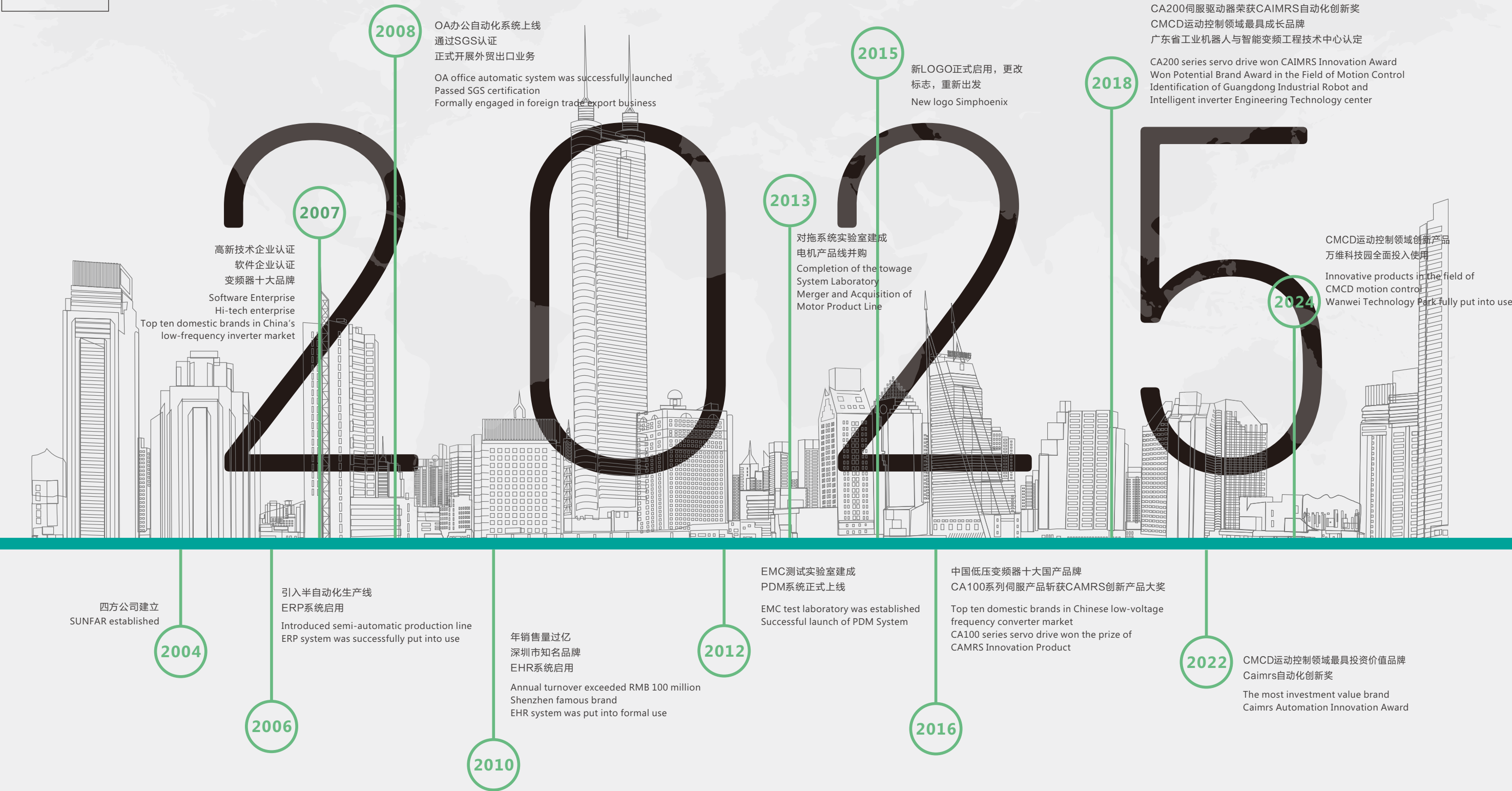
300+

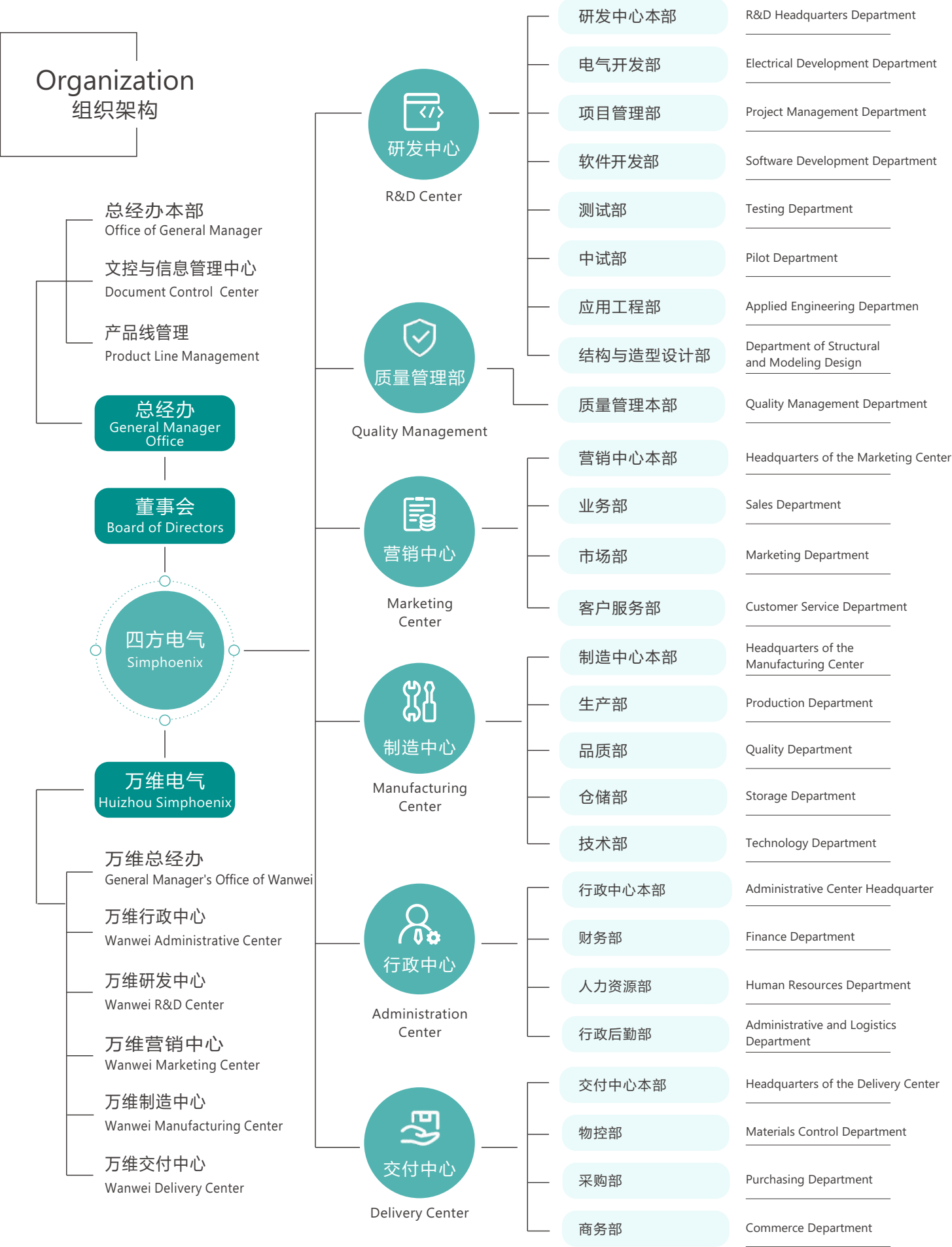
员工人数
Number of employees

1000_w

CNY
注册资本
Registered capital

History
发展历史





Honour
荣誉资质



公司自建立以来，十分注重自身素质的提高。二十多年来公司在市场准入以及资质认证方面均取得了突破性进展。取得的工厂资质证书包括：高新技术企业证书、环境管理体系认证证书、质量管理体系证书、有害物质过程管理体系证书等。此外，取得的产品资质证书有CE、RoHS等产品出口到世界各地的认证等.....

同时四方电气在行业深耕多年，不仅在市场上找到自己的一席之地，还在专业评奖中多次荣膺众多称号。一页页证书，见证了四方电气成立20多年来一路走来一次次的自我突破与不断提升，是其实力最好的诠释和证明。

Since its establishment, Simphoenix has always attached great importance to improving its own quality. Over the past two decades, the company has made breakthrough progress in both market access and qualification certification. The factory qualification certificates obtained include: High-tech Enterprise Certificate, Environmental Management System Certification Certificate, quality management System Certificate, Hazardous Substance Process Management System Certificate, etc. In addition, the obtained product qualification certificates include CE, RoHS and other products exported to the world certification and so on.

Meanwhile, Simphoenix has been deeply involved in the industry for many years. It has not only found its own place in the market but also won numerous titles in professional awards on multiple occasions. Each page of the certificate is a testament to Simphoenix's 20 years of establishment. Along the way, it has repeatedly broken through itself and continuously improved, which is the best interpretation and proof of its strength.

高新技术企业证书
Certificate of High-tech Enterprise



软件企业证书
Software Enterprise Certificate



深圳市知名品牌证书
Shenzhen Well-known Brand Certificate



软件产品证书
Software Product Certificate



3A级企业证书
3A-level enterprise certificate



专精特新企业认定
Specialized and New Enterprise



主营业务

MAIN BUSINESS

公司业务分为三大版块：传动产品，伺服与运动控制，工业控制，主要产品有伺服驱动器、变频器、永磁同步电机、PLC、HMI等。我们不断拓宽产品线，并提高产品品质，力求从多方面不同层次为客户带来价值上的提升。

Simphoenix's business is divided into three major segments: drive products, servo and motion control, and industrial control. Its main products include servo drivers, frequency converters, permanent magnet synchronous motors, PLC, HMI, etc. We are constantly expanding our product line and improving product quality, striving to bring value enhancement to customers from multiple aspects and at different levels.

传动产品

四方电气为客户提供的传动产品包括变频器，行业专机以及变频器选配件，力求为客户带来更多价值上的提升。

The drive products provided by Simphoenix for customers include: frequency converters, industry-specific machines and optional accessories for frequency converters, striving to bring more value enhancement to customers.

标准机 Universal Inverter



DL100系列小功率通用型变频器
DL100 Series Low-power Universal Inverter



DL300系列开环矢量型通用变频器
DL300 Series Open-loop Vector Universal Inverter



DL500系列矢量型通用变频器
DL500 Series Vector Universal Inverter



E550系列通用型小功率变频器
E550 Series Low-power Universal Inverter



DX100系列开环矢量变频器
DX100 Series Open-loop Vector Inverter



DX500系列高性能闭环矢量变频器
DX500 Series High-performance Close-loop Vector Inverter



DX550系列高性能闭环矢量变频器
DX550 Series High-performance Close-loop Vector Inverter



E580系列矢量型通用变频器
E580 Series Vector Universal Inverter

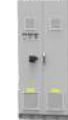
行业专机 Industrial Specific Machine



TS5600风冷机载柜式变频器
TS5600 Air-cooled Cabinet Inverter



TS6000水冷机载柜式变频器
TS6000 Water-cooled Cabinet Inverter



S5900风冷落地柜式变频器
S5900 Air-cooled Cabinet Inverter



FS100系列涡旋机专用驱动器
FS100 Series Special Drive for Scroll Machine



TX9000全冷媒柜式变频器
TX9000 Full Refrigerant Cabinet Inverter



S700系列水冷磁悬浮变频器
S700 series water-cooled magnetic levitation frequency converter



X700系列冷媒变频器
X700 series refrigerant inverter



X7000系列冷媒变频器
X7000 series refrigerant inverter



CD100系列伺服驱动器
CD100 Series Servo Drive



CD200系列脉冲型伺服驱动器
CD200 Series Digital Pulse Servo Drive



CD300E系列总线型伺服驱动器
CD300 Series EtherCAT Servo Drive



CM10系列伺服电机
CM10 Series Servo Motor

伺服与运动控制

基于当前制造业的转型升级，四方电气为客户准备了全套的伺服运动控制系统。

Servo and Motion Control

Based on the current transformation and upgrading of the manufacturing industry, Simphoenix has prepared a complete set of servo motion control systems for customers.

PLC



EP1S系列可编程控制器
EP1S Series Programmable Logical Controller

EP1E系列可编程控制器
EP1E Series Programmable Logical Controller



HMI



EM3系列人机界面
EM3 Series Human-machine Interface

工业控制产品

四方电气为客户提供包括PLC、触摸屏(HMI)等标准工业控制产品，满足客户在机械设备上的各种需求。

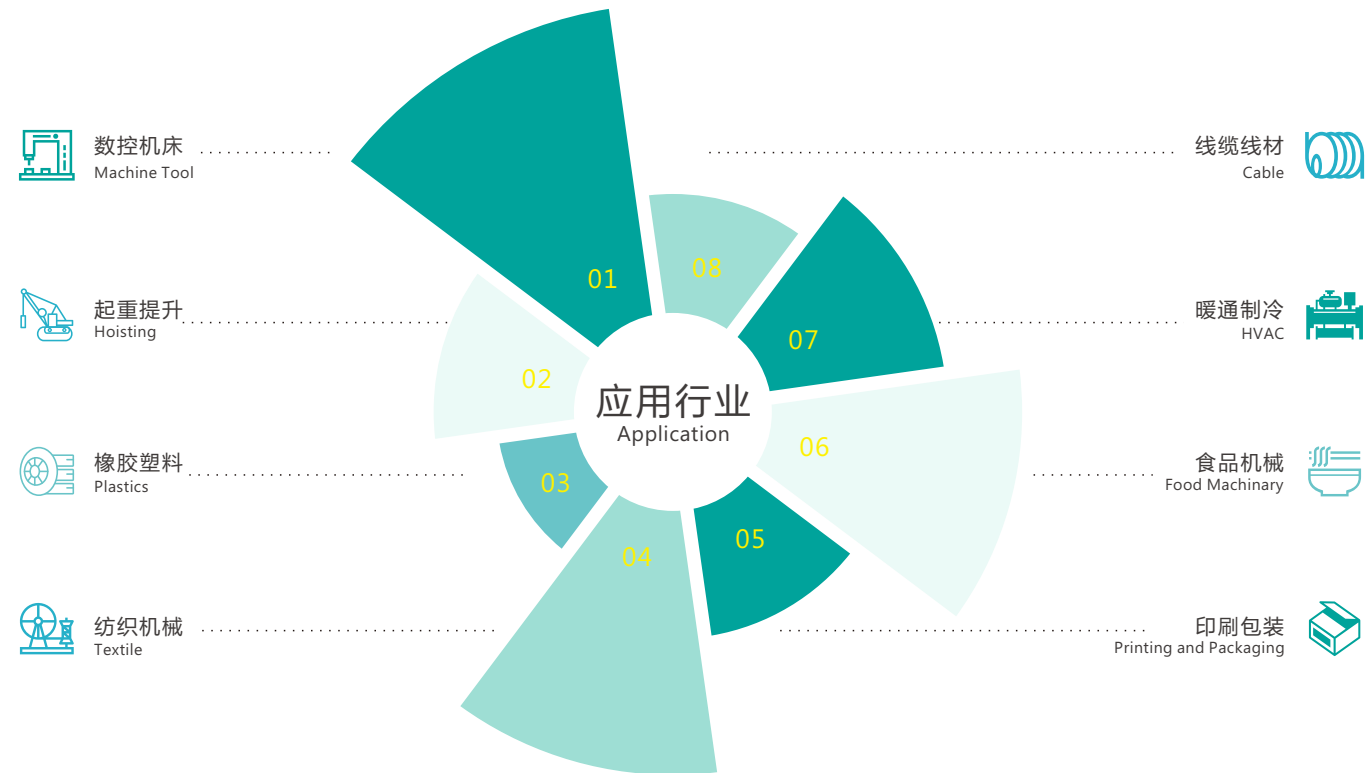
Industrial Control

Simphoenix provides customers with standard industrial control products including PLC, touch screen (HMI), etc., to meet various demands of customers in mechanical equipment.

Application 应用行业

锁定重点行业，深挖客户需求。四方电气通过深入的行业调研，主动融合客户需求，这种力量驱动四方以更专业的高度，提供更加稳定、可靠的产品和个性化的解决方案，最终协助客户获取商业价值，实现共赢。

Through in-depth industry research and proactive integration of customer requirements, Simphoenix everages its expertise to deliver more stable, reliable products and customized solutions. Ultimately, we help our clients achieve business value and mutual success.



面对行业性质的不同以及客户需求的千差万别，四方电气为客户提供定制化的解决方案和一站式服务。
In view of the different characteristics of industry and variety of customer needs, we provide with customized solutions and one-stop service.



3,000+

服务客户
Service Customer



70,000+

应用场景
Application scenarios



500+

服务行业
Industries

Cooperative Partners 合作伙伴

四方电气与诸多知名企业建立良好的合作伙伴关系，互利共赢，共创未来。

Simphoenix have established strong partnerships with numerous renowned enterprises. Advancing mutual gains and co-creating a future of long-term growth and cooperation.



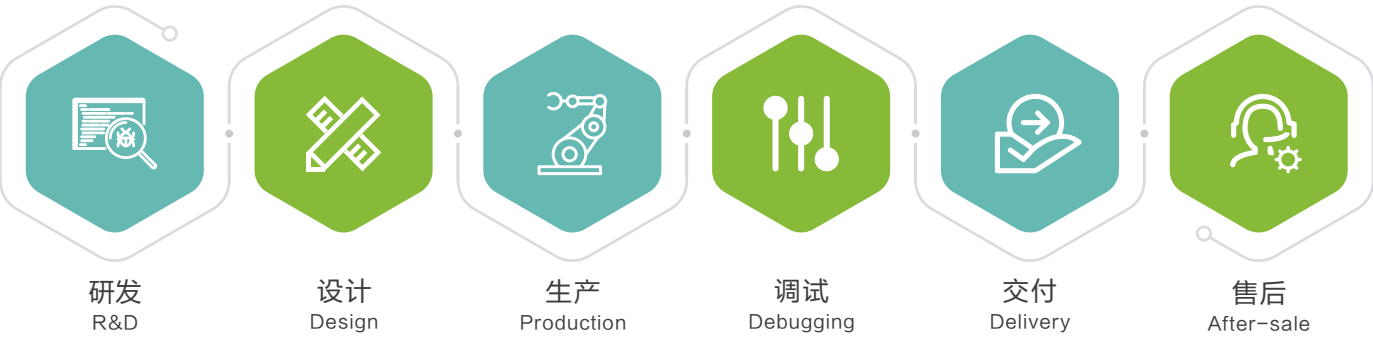
Core Advantage

核心优势



四方电气一直奉行真正为客户创造价值的原则，苦练内功，从研发、设计、生产、调试、交付到售后，持续以匠心优化每一个环节，在为客户赋能的同时，自身也得到了长足发展。

Simphoenix follow the principle of creating value for customers, continuously optimizing every process including R&D, design, production, commissioning, delivery and after-sales. While empowering our customers, we have also achieved significant development.



以优质产品赢得用户信赖

Win customer’s trust with high-quality products

二十多年来，通过持续技术创新和产品升级，四方电气在成为卓越的自动化产品和解决方案提供商的道路上不断前行。通过在核心产品上积累的丰富技术经验，四方电气加快研发力度，并通过持续增加研发投入，逐步扩展含变频器、伺服驱动器、永磁同步电机、PLC、HMI在内的全系列产品线，紧密贴近客户，持续为客户提供满意产品和解决方案。

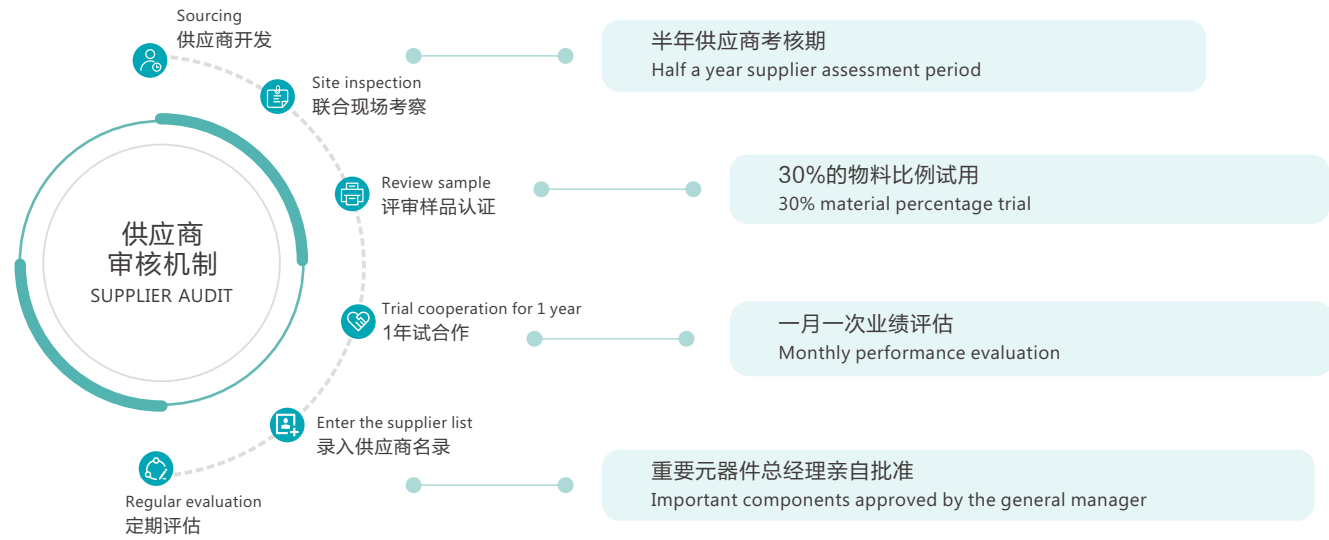
Over the past twenty years, through continuous technological innovation and product upgrades, Simphoenix has been continuously advancing on the path to becoming an outstanding provider of automation products and solutions. Through accumulating rich technical experience in core products, Simphoenix has accelerated its research and development efforts, and gradually expanded its full range of product lines including frequency converters, servo drives, PLC, and HMI, closely approaching customers and continuously providing satisfactory products and solutions.

可靠的品质保证

Quality Assurance

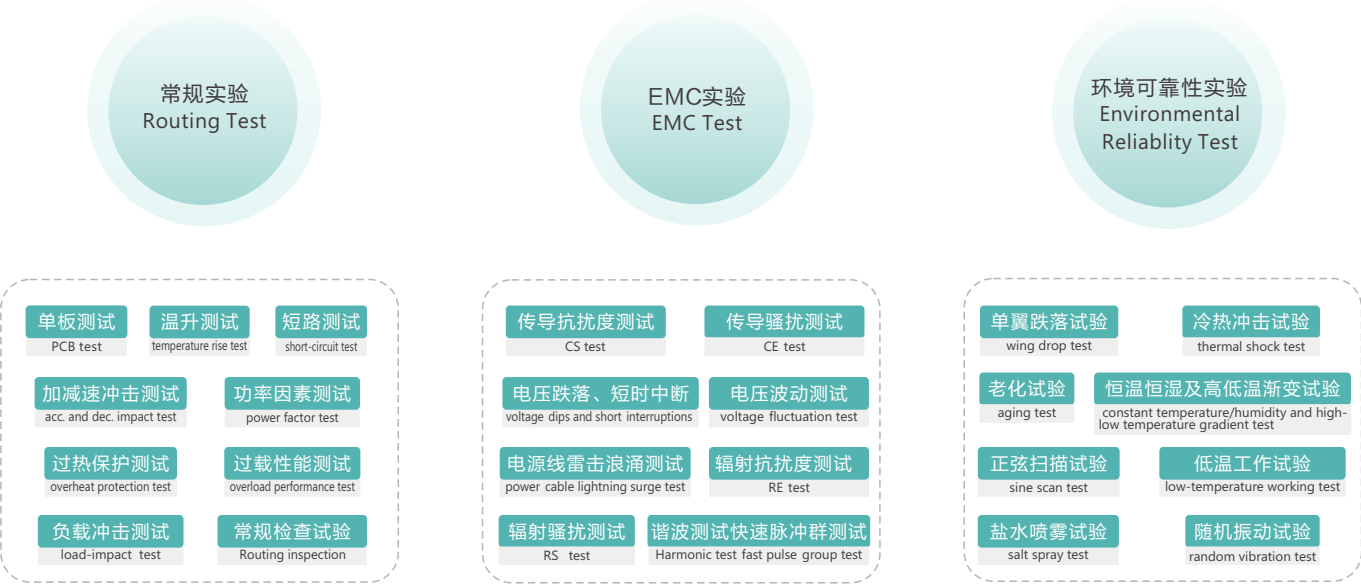
品质是品牌的基石，四方对产品质量管控的投入体现在研发、采购、生产、售后等多个环节，目的是创造出更加完美、更加适应市场需求、不断实现客户价值的产品。

Quality is the cornerstone of the brand. Simphoenix's investment in product quality control is reflected in R&D, procurement, production and after-sales service, with the aim of creating products that are more perfect, more adaptable to market demand and constantly realize customer value.



所有产品设计均执行标准研发流程，研发过程分为6大研发阶段，98个研发节点，7个关键环节评审，以及多机构、多部门参与的检测与测试。其中，产品的型式检验包括常规检测、EMC实验和环境可靠性实验。

All product designs follow the standard R&D process, which is divided into 6 major R&D stages, 98 R&D nodes, 7 key link reviews, as well as testing and inspection involving multiple institutions and departments. Among them, the inspection of the product includes routine test, EMC test, and environmental reliability test.



产品的品质来源于标准，标准的背后是严格把控。为了提供更高品质的产品，四方在测试手段和测试设备上实现了全面的升级。

The quality of the products comes from the standard, behind the standard is the strict control. In order to provide higher quality products, Simphoenix has achieved a comprehensive upgrade in testing means and testing equipment.



大功率全负载测试系统(Pmax=2000kW)
High power full load testing system



电磁兼容检测中心
EMC Testing Center



环境可靠性检测中心
Environmental Reliability Testing Center

生产保证 Quality Assurance

为扩大生产规模，提升公司整体实力，四方电气在惠州市仲恺高新区投资新建了一所现代化工业园——万维科技园。一期主要作为四方电气中小功率变频器和伺服产品的生产基地，二期主要用于四方电气大功率产品的生产。目前万维科技园一期和二期项目已全面启用，借力新园区的先进生产设备和检测设备，公司对核心产品进行全面的迭代升级和性能提升。

In order to expand production scale and enhance the overall strength of the company, Simphoenix has invested in the construction of a modern industrial park - Wanwei Technology Park - in Zhongkai High-tech Zone, Huizhou.

The first phase is mainly used as a production base for small and medium power frequency converters and servo products, while the second phase is mainly used for the survival of high-power products. At present, the first and second phases of the Wanwei Technology Park project have been fully put into use. Leveraging the advanced production and testing equipment in the new park, the company has conducted comprehensive iterative upgrades and performance improvements on its core products.



55,000_w

总投资
Total Investment

29,275_{m²}

占地面积
Cover an area

85,000_{m²}

建筑面积
Floorage area

2,000,000_{Sets}

年产能
Annual capacity



PCBA生产车间

整合长期委外的SMT生产和DIP生产重要环节，集生产、测试、覆涂为一体，进一步提升品质，缩短交付时间。

With the SMT production and DIP production, Simphoenix can integrate production, testing, and coating to reduce interruptions in the production process, make sure the quality of products.



自动化生产线

拥有6条自动化生产线。生产过程全面使用自主开发的测试工装，有效提升生产效率和产品品质。

6 fully automated production lines. The production process fully utilizes self-developed testing fixtures, effectively improving production efficiency and product quality.



数字化仓储物流

优化交付，保障配送环节，快速响应用户需求。

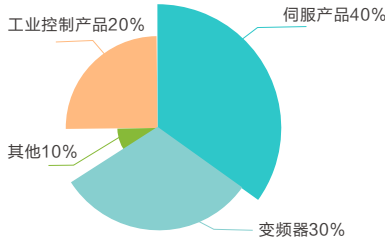
Optimize delivery, ensure delivery process, and quickly respond to user need.

以持续创新稳固发展基础

Steady growth of R&D investment

自主创新为企业良性发展提供了原动力，持续的研发投入为创新注入源源不断的活水。作为技术研发型企业，四方电气每年的研发投入在主营业务收入中占比10%以上，且近3年呈连续增长势头。公司目前拥有有效自主知识产权145项，其中专利97项、软件著作权48项。借助这些成果，四方电气有多个产品在国内细分市场领域占据主要地位。创新为四方的良性发展提供了原动力。

Independent innovation provides the driving force for the healthy development of enterprises, and continuous R&D investment injects momentum into innovation. As a technology research and development enterprise, Simphoenix's annual R&D investment accounts for more than 10% of its main business revenue, and has shown a continuous growth trend in the past three years. The company currently has 145 valid independent intellectual property rights, including 97 patents and 48 software copyrights. With these achievements, Simphoenix has multiple products that occupy a dominant position in the domestic segmented market. Innovation provides the driving force for the healthy development of Simphoenix.



研发费用比例分配

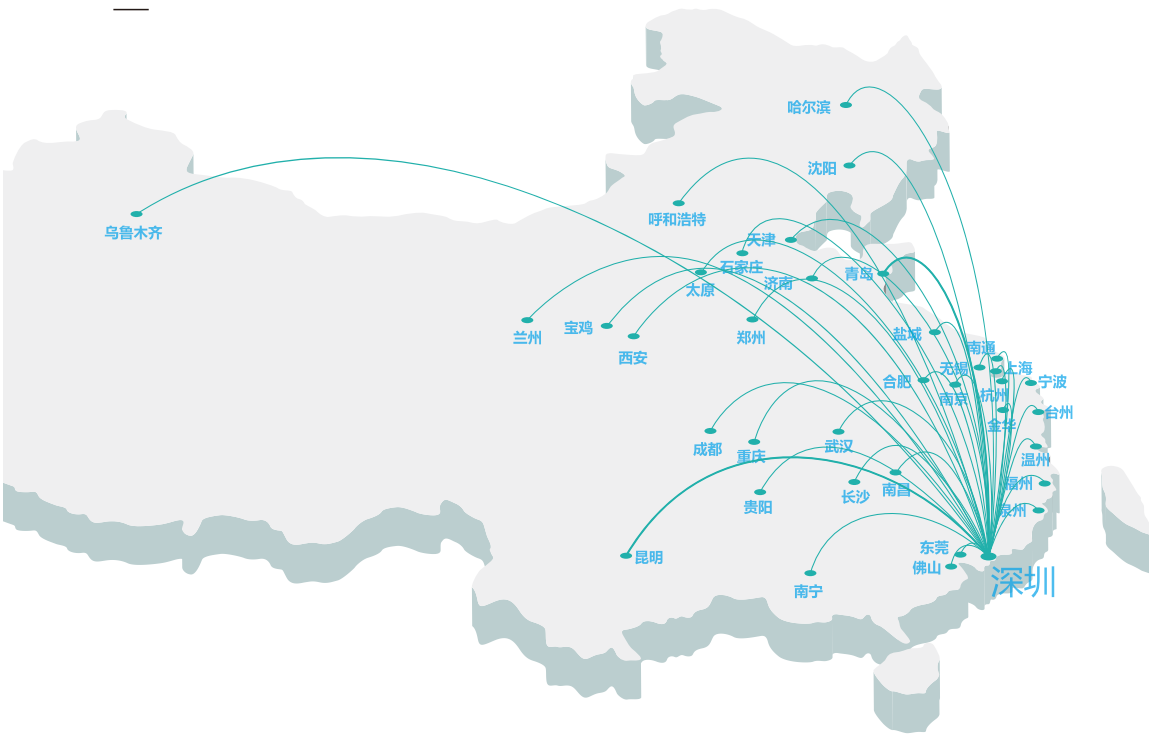
四方电气一直注重研发人才的引进与培养。自2008年起，每年走进高校招聘专业人才，并与国内众多科研院校建立长期的产学研合作关系。目前四方研发团队占公司总人数约25%。其中硕博比例15%。四方电气在引进人才、留住人才、激励人才等各方面都建立了长效的人才培养体制。

Simphoenix has always attached great importance to the cultivation of research and development talents. Since 2008, we have been recruiting professional talents from universities every year and establishing long-term industry university research cooperation relationships with numerous domestic research institutions. At present, the Simphoenix R&D team accounts for about 25% of the total number of employees in the company. The proportion of graduate and doctoral students is 15%. Simphoenix has established a long-term talent training system in various aspects such as introducing, retaining, and motivating talents.



以完善服务解决后顾之忧

Supply the best services to our partners



5
大区
5 regions

35
办事处
35 offices

60+
服务团队
60+ service teams

深圳市四方电气技术有限公司自成立之初就建立了一套完善的客户服务体系，并在“为客户提供主动增值性服务”的核心理念指导下成立了客户服务中心。二十年来，四方客户服务中心不断发展和壮大，现已建成由60多名专业人才所组成的强大客户服务团队。他们正以饱满的热情，随时准备为合作伙伴和企业用户提供最优质、高效的服务。

Since its establishment, Simphoenix has established a set of perfect customer service system, and established a customer service center under the guidance of the core concept of "providing active value services for customers". In the past twenty years, Simphoenix customer service center has been developing and growing, and now has built a strong customer service team with more than 60 professionals. With full enthusiasm, they are ready to provide customers with the best and efficient service.

快捷

Quick

全国5大区，35个办事处
销售网点辐射全国

5 regions and 35 offices
Sales outlets nationwide

专业

Professional

60余名经过严格培训上岗的
专业技术人员构建强大的客服团队

More than 60 professional customer service personnel

贴心

Concern

24小时服务热线全天
恭候悉心解决客户诉求

24-Hour Service Hotline
Resolve customer demands

高效

Efficiency

满足合作伙伴与企业
用户的需求

Meet the needs of customers
with the best service

海外市场一直是四方电气战略部署的重点，目前，四方营销网络覆盖东南亚、中东及南美等二十多个国家地区，近年来逐步向欧美延伸。每年四方都会组织业务人员进行海外市场调研和客户拜访工作，并不定期参与各类海外展会。


Simphoenix have always attached great importance to overseas markets. At present, Simphoenix 's overseas network covers more than 20 countries and regions in Southeast Asia, Middle East and South America, and has been gradually extended to Europe and America in recent years. Every year, Simphoenix organizes sales manager and senior engineer to conduct overseas market research and customer visits, and participate in various overseas exhibitions.

客户拜访

展览活动

★ 公司总部
Headquarter

- 国内销售服务网络
Domestic sales offices

 海外销售网络
Overseas sales offices



企业文化

ENTERPRISE CULTURE



品牌故事

公司标志以线条构成的抽象图形凤和sim phoenix公司简称字母构成，整体视觉形象升级。英文名称中的“phoenix”意为凤凰，传说中的百鸟之王，众多典故中凤凰是不断追求、提升自我的执着精神代表，意寓四方电气创新、不断进取的企业精神。名称上方是由线条打散旋转成的抽象phoenix凤凰图案，通过平面构成的螺旋式渐变骨骼表现出凤凰蓄势待发，展翅高飞的场景。富有动感的凤同时又如太阳光芒放射状散开，象征科技之翼，创新之魂。整体LOGO体现了四方电气将以不断创新、进取的精神，引领自动化行业走向新的高度。

Brand Story

The logo is a combination of an abstract phoenix formed by lines and the letter “Simphoenix” which is our company’s name for short. It is overallly vivid and significant. “Phoenix”, king of birds, which represents a spirit of constant pursuit and improvement, also implicates our corporate culture of innovation and continuous improvement. The pattern above the company’s name is an abstract picture of a phoenix composed of several lines in helical shape to simulate a wing-spreading phoenix which is going to fly. The same pattern is also like the radiating sun symbolizing the wing of technology and spirit of innovation. The entire LOGO embodies our spirit of continuous innovation and improvement, with which we are sure to lead the automation industry to a new height.



Life
四方生活

丰富的职工文化生活，激发了企业的活力与创新

在保证生产的同时，四方电气也不断丰富员工的业余文化生活。公司定期开展各类文娱活动，以此加强职工彼此之间的沟通，深化相互间的友谊，进一步提升员工们的团结、协作能力。

At the same time of ensuring production, Simphoenix takes many measures to enrich the amateur cultural life of employees. The company regularly carries out various recreational activities to strengthen the communication between employees, deepen mutual friendship and further enhance the unity and collaboration of employees. The rich cultural life of the staff stimulates the vitality and innovation of the company .



企业动态，热点剖析
成果分享，点滴乐趣
四方人，四方生活，四方人生
全方位为你展现一个真实的四方电气

《VOICE OF SIMPHOENIX》杂志是由深圳市四方电气技术有限公司自行发行的企业刊物，这里有四方电气最新的企业动态、行业热点的理解剖析、技术创新的成果分享、发现生活的点滴乐趣。我们与您一起分享四方电气在转型过程中和技术创新中的所得所失、所思所想。目前杂志以免费赠阅的形式公开发行和投放，欢迎索要和阅读。

VOICE OF SIMPHOENIX magazine is a corporate publication issued by Shenzhen Simphoenix Electric Technology Co.,Ltd. The magazine will share with you the latest enterprise dynamics of Simphoenix, the analysis of industry hotspots, the technological innovation achievements, and the joys of life. Will share with you the gains and thoughts of Simphoenix in the process of technological innovation. At present, the magazine is publicly distributed and published in the form of free giveaways, welcome to request and read it.

展望

ENTERPRISE VISION

驻足回望，
四方人用精益求精凝聚客户，用追求卓越铸就品牌，
用自强不息创造辉煌，用永不放弃的精神执着拼搏。
展望未来，
四方人正以博采众长的广阔胸襟，
坚韧不拔的恢弘气度，
诚信至上的品格特质，
向卓越的自动化产品和解决方案提供商的战略目标阔步迈进。

Looking back,
we strive for excellence to unite customers and build a brand
through the pursuit of excellence.
Create brilliance through self-improvement, and persistently strive
with an unyielding spirit.
Looking into the future,
We are embracing the broad mindedness of learning from others'
strengths, Perseverance and grandeur, The character trait of putting
integrity first,
Striving towards the strategic goal of becoming an excellent
provider of automation products and solutions.